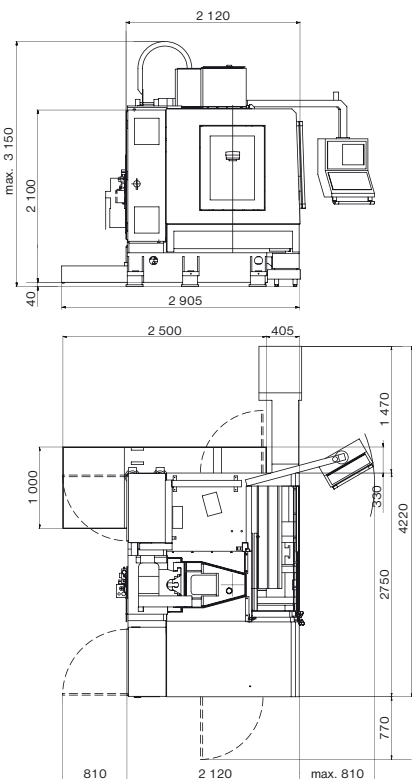




- High performance
- High strength and rigidity
- High dynamic and thermal stability
- Long-lasting high accuracy
- High reliability
- Guards making manipulation with workpieces easy
- Model flexibility
- Ecologically friendly

# MCFV 1060

The **MCFV 1060** vertical machining centre covers the whole scale of technologies from the power up to the high-speed machining. The machine is formed by two steady castings which are the base and the column fastened on it. All movements of the machine are realized by means of the linear guideways with rolling elements. Their dimensions and locations allow the high load of the table, saddle and spindle head while the high accuracy of dimensions and quality of workpieces are kept even at the interrupted cut. It also ensures the machine long service life. The wide application of the machine invites to the usage of the plentiful accessories.



## TECHNICAL DATA

### Travels

|                                   |                      |
|-----------------------------------|----------------------|
| X-axis (work table)               | 1 016 mm             |
| Y-axis (cross saddle)             | 610 mm               |
| Z-axis (spindle head)             | 760 mm               |
| Distance of spindle nose to table | 150 – 910 mm         |
| Max. working feed                 | 15 m/min             |
| Rapid traverse                    | 40 m/min             |
| Acceleration                      | 5 m/sec <sup>2</sup> |

### Table

|                                  |                    |
|----------------------------------|--------------------|
| Working area                     | 1 270 × 590 mm     |
| Number of T-slots × width × span | 5 × 18 mm × 125 mm |
| Max. load                        | 1 350 kg           |

### Accuracy (VDI/DGQ 3441)

|                          |               |
|--------------------------|---------------|
| Positioning accuracy (P) | 0.008 mm      |
| Repeatability (Ps max.)  | 0.005 mm      |
| Measuring system         | linear rulers |

### Spindle

|  | ISO 40 (HSK-A80)   | ISO 50     | ISO 40     | ISO 50     | ISO 40          | HSK-A63    |
|--|--------------------|------------|------------|------------|-----------------|------------|
| Clamping taper                         | ISO 40 (HSK-A80)   | ISO 50     | ISO 40     | ISO 50     | ISO 40          | HSK-A63    |
| Maximum speed                          | 10 000 rpm         | 8 000 rpm  | 12 000 rpm | 8 000 rpm  | 15 000 rpm      | 18 000 rpm |
| Continuous output / overload S6 – 40 % | 20/28 kW           | 20/30 kW   | 17/25 kW   | 17/25 kW   | 25/31 kW        | 25/31 kW   |
| Max. torque / overload S6 – 40 %       | 244/342 Nm         | 306/458 Nm | 96/141 Nm  | 143/210 Nm | 159/197 Nm      | 159/197 Nm |
| Transmission type                      | planetary gearbox* |            | belt drive |            | electrospindle* |            |

### Tool magazine

|                                 |         |
|---------------------------------|---------|
| Number of tool pots in magazine | 30      |
| Tool interchange time           | 3.5 sec |
| Tool maximum diameter:          |         |
| – fully occupied magazine       | 80 mm   |
| – without adjacent tools        | 160 mm  |
| Tool maximum length             | 300 mm  |
| Tool maximum weight             | 6.5 kg  |
| Total maximum weight            | 160 kg  |

### Power supplies

|   |           |         |
|---|-----------|---------|
| Operational power input – acc. to motor | 35        | kVA     |
| Nominal voltage of mains                | 3 × 400   | V/50 Hz |
| Compressed air                          | 0.6 – 0.8 | MPa     |

### Complementary data

|   |               |    |
|---|---------------|----|
| Floor layout of machine without chip conveyor | 2 750 × 2 120 | mm |
| Machine maximum working height                | 3 150         | mm |
| Machine weight                                | 7 700         | kg |

### Control system

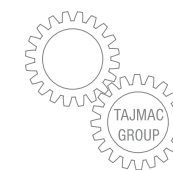
HEIDENHAIN, SINUMERIK\*, FANUC\*

Descriptions of illustrations and specifications may not always correspond with the machine latest version.

Manufacturer  
**TAJMAC-ZPS, a. s.**  
 Třída 3. května 1180  
 764 87 Zlín, Malenovice  
 CZECH REPUBLIC  
 Tel.: +420 577 532 072  
 Fax: +420 577 533 626  
 www.tajmac-zps.cz  
 e-mail: info@tajmac-zps.cz

Holding  
**TAJMAC-MTM, S. p. A.**  
 Via Gran Sasso 15  
 20092 Cinisello Balsamo (MI)  
 ITALY  
 Tel.: + 39 02 66017878  
 Fax: + 39 02 66011457  
 www.tajmac-mtm.it  
 e-mail: tajmac@tajmac-mtm.it

TIGRIS, s.r.o., Zlín 3/2013



### STANDARD VERSION

- Digital drives
- Linear optoelectric measuring rulers
- Tool magazine with tool change arm
- Central lubrication system
- Tool holder automatic air blasting
- Coolant unit with tool cooling system
- Washing off of telescopic covers
- Electronic compensation

### OPTIONAL EQUIPMENT\*

- Tool cooling with coolant through spindle axis
- Tool cooling with air through spindle axis
- Coolant unit with filtration unit for cooling through spindle axis
- SK 50 – tool magazine with capacity of 24 tools
- Clamping taper – CAT 40, BT 40, CAT 50, BT 50, ISO 50, HSK-A63, HSK-A80, HSK-A100
- Rotary table, 4th and 5th controlled axis
- Workpiece dimension checking probe
- Tool dimension checking probe
- Manual pallet changer, pallet size 760 × 460 mm
- Automatic pallet changer, pallet size 1250 × 590 mm
- Chip conveyor
- Chip buckets
- Work zone washing off – upper
- Tool cooling with oil mist
- Centrifugal separator of oil mist and emulsion aerosol from work zone
- Oil collector from coolant surface
- 2 tool magazines